



Homes-Extra

CONDOS

FAST FACTS

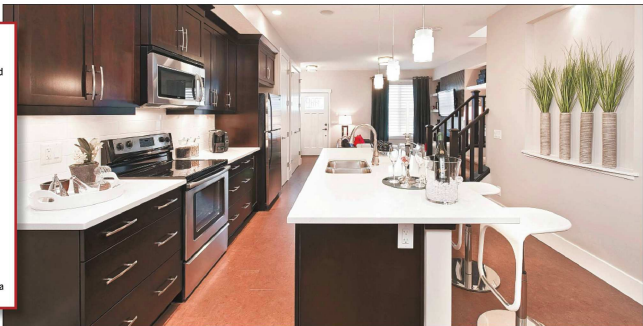
BUILDER/DEVELOPER: Birchwood Properties (builder)/Remington Development Corporation (developer)

AREA: Quarry Park
PRICE: Starting at \$449,900 plus GST

DIRECTIONS: From Glenmore Tr. head south on 18 St. S.E. Turn right onto Quarry Park Blvd. Or take Deerfoot Trail south to the Douglasglan turnoff and follow through to Quarry Park.

HOURS: Monday to Thursday 2 p.m. to 8 p.m., weekends and holidays noon to 5 p.m.

CONTACT: Call 403-236-1179 or visit www.birchwoodproperties.ca



Birchwood's elegant Boulevard Townes

"Everything a homeowner is looking for is right here in Quarry Park."

Executive townhomes with architecture reminiscent of a classic French neighbourhood, Boulevard Townes by Birchwood Properties offers unmatched elegance in one of Calgary's up and coming neighbourhoods, Quarry Park.

Lauren Barr
 CALGARY SUN
 "We are currently in Phase three of the Boulevard," says Adele Kerr. "Phases four and five, the final phases, will be released later this year, which will complete the development."

Phase three consists of three buildings, 16 units total. With six unit types, ranging in size from 1,512 sq. ft. to 1,779 sq. ft., and two- or three-bedroom layouts, there is a plan matching any lifestyle.

Both the exteriors and interiors of the two-storey townhomes are elegantly appointed.

"Stucco, brick and stone detailing, along with a vibrant colour palette give these charming townhomes amazing curb appeal all the way around the Boulevard," Kerr says.

"Each of our homes has been designed with an open concept through the main level. Combined



with nine-foot ceilings and eight-foot passage doors, the interiors have a very spacious feeling."

There are two showhomes on display, the 1,512-sq.-ft. Chelsea and the 1,732-sq.-ft. Madison. Each showcases the lovely detailing found in the townhomes.

The kitchens feature oversized islands with eating bars and spacious pantries.

Hardwood floors are found throughout the main level, with granite or quartz countertops in the kitchen and a stainless steel appliance package.

Railing lines the stairwell heading upstairs, while upscale vessel sinks are found in the bathrooms.

"On the upper level, the master bedrooms include large walk-in closets and four-piece ensuite," she says.

"Some of the units include built-in tech areas, as well as dramatic open-to-below features."

All of the units have the mechanical room in the attic, allowing for full basement development.

There is also lots of parking, with a double-detached garage in the rear and plentiful street parking out front.

One of the greatest benefits of the

townhomes is the premier location within Quarry Park.

"Quarry Park has been a bit of a hidden gem in the south that has now finally been discovered," Kerr says.

"We have seen real increase in excitement in the community, particularly since the announcement of Imperial Oil moving into the area in 2014.

"The more people that visit Quarry Park and see the great location with all the amenities, the more the excitement keeps building."

There are many amenities within walking distance, including Co-op, Merle Norman, Starbucks, Original Joe's and more.

The Bow River is also within walking distance, as is the Carburn Park off-leash area, which works well with Boulevard's pet-friendly units.

"There is a quick and easy commute around Calgary, with great access to Deerfoot and Glenmore Trails," she says.

"All of the amenities found in Riverbend and Douglasglan are also only a couple of minutes away. Everything a homeowner is looking for is right here in Quarry Park."