

MOVE IN
TO YOUR NEW HOME
TODAY

FEATURING UNIT 1204

Modern 3-storey Townhome
with Double Attached Garage

UNIT 1204

32 Horseshoe
Crescent, Cochrane

THE HIGHLAND

1,372 Square Ft.

3 Bedrooms

2.5 Bathrooms

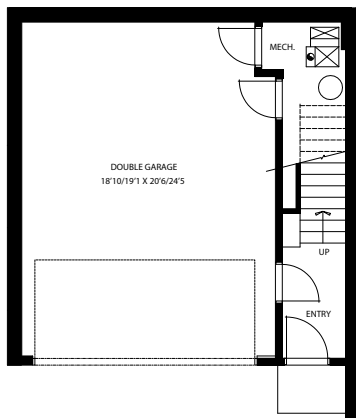
Dbl. Attached Garage

\$299,900 INCL. GST

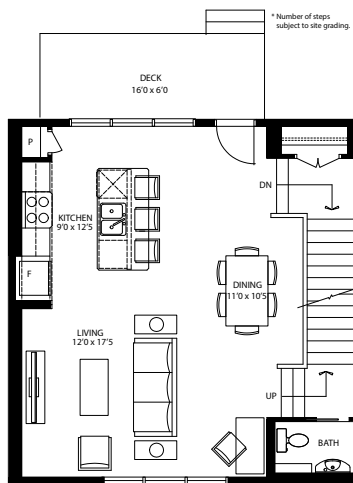
REDUCED OVER \$20,000



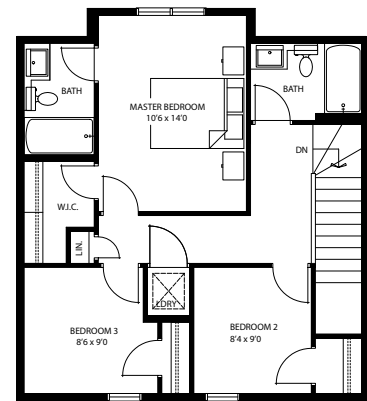
Upgrades include maple kitchen cabinets, quartz countertops and undermount sinks in the kitchen and ensuites, modern mosaic kitchen backsplash, and upgraded stainless steel appliance package. With unobstructed mountain views from West facing patio.



Garage Level
48 sq. ft.



Main Floor
650 sq. ft.



Upper Floor
674 sq. ft.

For more information please contact:

Ellie Hamilton, Community Sales Manager
ellie@birchwoodproperties.ca • 403-605-1400



www.brandtownhomes.ca